


**IOWADOT**

## Program and Project Development Updates

ACEC - Iowa DOT - FHWA Transportation Conference  
September 19, 2023

---

M.J. "Charlie" Purcell, P.E.  
Deputy Director, Transportation Development Division  
Iowa Department of Transportation



Program and Project Development Updates **IOWADOT**

### 2024-2028 Iowa Transportation Improvement Program



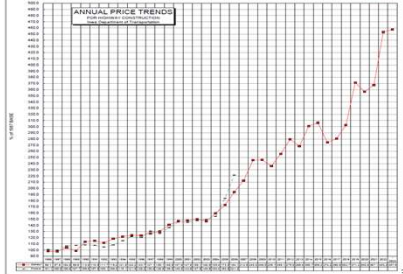
2

Program and Project Development Updates **IOWADOT**

### Iowa Highway Construction Price Index

FY21 to 22: +23.4%

FY22 to 23: +1.0% (Thru 2<sup>nd</sup> quarter)



3

Program and Project Development Updates **IOWADOT**

### FY23 End of Year Program Balance

FY 2023 Program Balance (June 2022)		(11.6)
Forecast PRF Receipts (June)	880.7	
Actual PRF Receipts (June)	<u>949.9</u>	
Difference		69.2
Programmed Amounts (June)	738.3	
Project Costs (June)	<u>875.9</u>	
Difference		(137.6)
<b>Program Balance (June 2023)</b>		<b>(80.0)</b>

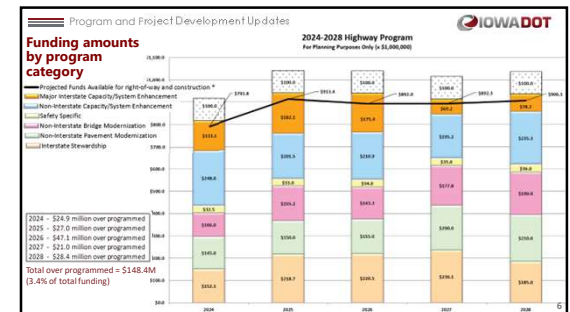
4

Program and Project Development Updates **IOWADOT**

### FY24 Current Program Balance

FY 2024 Program Balance (June 2023)		(24.9)
Forecast PRF Receipts (July)	73.6	
Actual PRF Receipts (July)	<u>75.4</u>	
Difference		1.8
Programmed Amounts (August)	173.6	
Project Costs (August)	<u>174.5</u>	
Difference		(0.9)
<b>Program Balance (August 2023)</b>		<b>(24.0)</b>

5



Program and Project Development Updates **IOWADOT**

**Underfunded Projects**  
For Highway Planning Purposes Only (1:31.000.000)

County	Route	Description	2024	2025	2026	2027	2028	
Johnson	I-380	Wright Brother Blvd	Total Cost	2,295	99,087	119	-	-
			Funded Amount	2,295	48,087	119	-	-
			Under Funded Amount	0	50,000	0	-	-
Scott	I-80	Middle Road Interchange	Total Cost	-	-	57,883	-	260
			Funded Amount	-	-	32,883	-	260
			Under Funded Amount	-	-	25,000	-	0
Harrison	US 30	Missouri Valley Bypass	Total Cost	-	-	9,929	103,247	-
			Funded Amount	-	-	9,929	68,347	-
			Under Funded Amount	-	-	0	35,000	-
Black Hawk	IA 58	Greenhill Road Interchange	Total Cost	-	-	-	261	53,222
			Funded Amount	-	-	-	261	29,222
			Under Funded Amount	-	-	-	0	24,000
Woodbury	IA 12	Gordon Drive Viaduct	Total Cost	-	-	-	-	40,000
			Funded Amount	-	-	-	-	26,000
			Under Funded Amount	-	-	-	-	14,000

Program and Project Development Updates **IOWADOT**

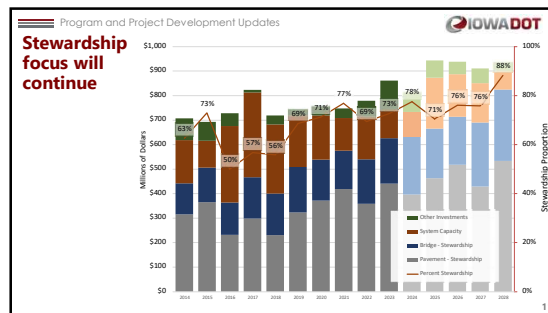
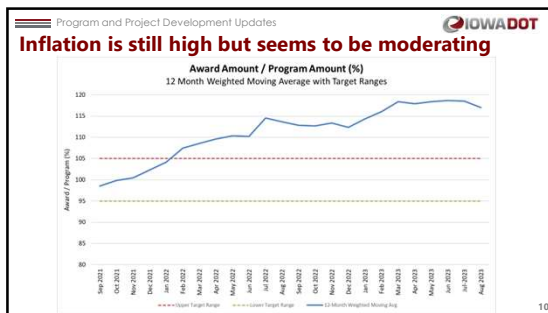
**Back of Program Line Items**

2024 - 2028 IOWA HIGHWAY PROGRAM

Location	Miles	Type Of Work	2024	2025	2026	2027	2028
Scenic Byway Program		Miscellaneous	500	500	500	500	500
Statewide Consultant Services		Outside Services	59,000	59,000	59,000	59,000	59,000
Statewide Contract Maintenance		Miscellaneous	36,850	37,350	37,850	38,350	43,500
Statewide Railroad Crossings		Miscellaneous	500	500	500	500	500
Statewide Roadside Improvement		Landscaping	2,500	2,500	2,500	2,500	2,500
Statewide Traffic Control Devices/Signs		Traffic Signs	5,000	5,000	5,000	5,000	5,000
Statewide ITS		Miscellaneous	5,750	5,750	5,750	5,750	5,750
Statewide Interstate Pavement Maintenance		Pavement Rehab	9,500	9,500	9,500	14,500	14,500
Statewide Operations		Outside Services	11,000	11,000	11,000	11,000	11,000
Winter Maintenance Materials		Miscellaneous	15,000	15,000	15,000	15,000	15,000

**IOWADOT**

## FY25-29 Program Outlook



- Program and Project Development Updates **IOWADOT**
- ### Interstate Projects
- Stewardship
    - 4R program priorities are being re-evaluated
    - May put more emphasis on pavement stewardship needs
    - Need to look at options for just replacing bridges at interchanges
    - Large 4R projects may need to compete with Major Interstate (MI) capacity projects

### Program and Project Development Updates

#### Interstate Projects

- Capacity
  - Amount of capacity improvements may need to be adjusted to reflect bigger stewardship investments
  - Interstate Investment Plan will need to be adjusted

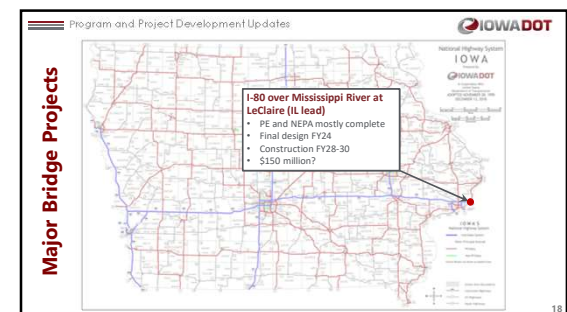
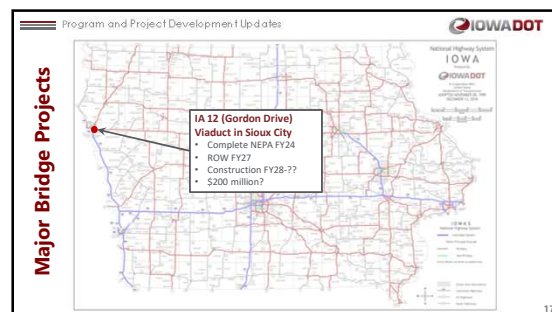
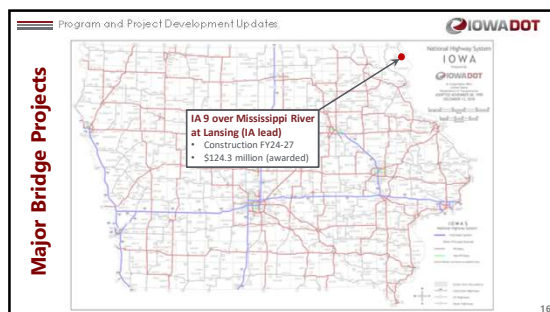
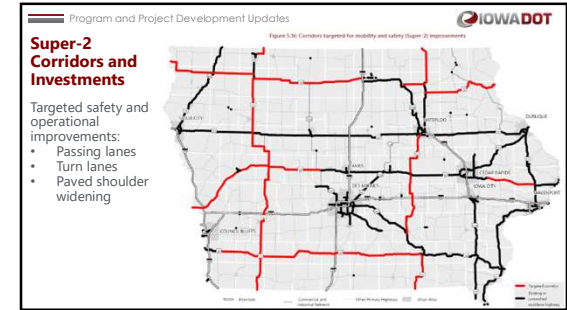
13

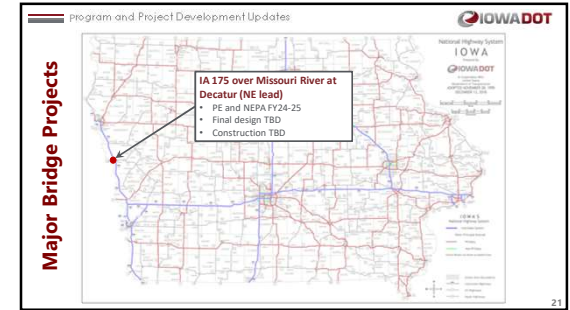
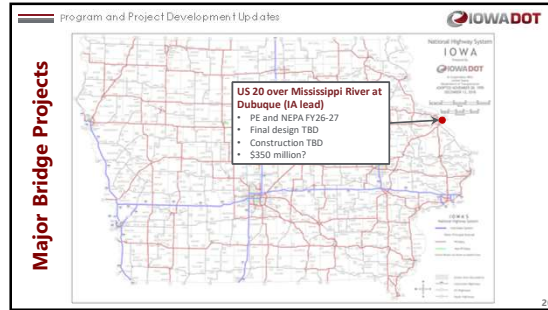
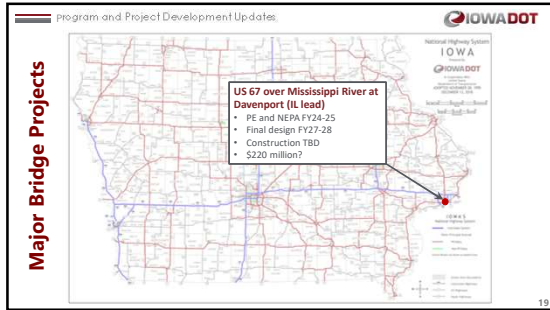
### Program and Project Development Updates

#### Interstate Plan

Route Segment	Program Years						Plan Years					
	2021	2022	2023	2024	2025	2026	2027	2028	2029	2030	2031	2032
I-80 - Duffalo to Mackinac												
I-80 - Iowa City to Des Moines												
I-80 - Marshall to Leavelle												
I-80 - Sioux Falls to Denver												
I-80 - Superior to Mackinac Island												
I-80 - Superior to Mackinac Island												
I-80 - Superior to Mackinac Island												
I-80 - Superior to Mackinac Island												
I-80 - Superior to Mackinac Island												
I-80 - Superior to Mackinac Island												

14






Program and Project Development Updates

# Project Development Updates

- Program and Project Development Updates
- 
- Business case process**
- What is a business case?
  - Why did we develop this process?
  - Which projects require a business case?
  - How are business cases evaluated?
- 23

- Program and Project Development Updates
- 
- Utility process improvements**
- Why are we focused on this?
  - What has been done so far?
  - What are the next steps?
- 24

Program and Project Development Updates 

**Questions?**

**M.J. "Charlie" Purcell, P.E.**  
Deputy Director, Transportation Development Division  
Iowa Department of Transportation  
[Charlie.Purcell@iowadot.us](mailto:Charlie.Purcell@iowadot.us)

25