

Load Rating Programs

Iowa DOT

- LARS
- CulvertCalc
- Transitioning to AASHTOWare BrR
- Iowa Automated Permit System (IAPS)
 - SUPERLOAD CE

Local Public Agencies

- Method of Choice
 - In-House Spreadsheets
 - CulvertCalc
 - AASHTOWare BrR
- In-Progress of Obtaining an Agency Sponsored License for AASHTOWare BrR

Software Logos: Bentley LARS Bridge, CulvertCalc IA, mathcad, Excel, IOWA AUTOMATED PERMIT SYSTEM

IOWA DOT **Michael Baker INTERNATIONAL**

Implementation of AASHTOWare BrR Program for Rating Iowa Bridges

Challenges for Locals: New Trucks

Trucks Added in the Last 10 Years in Iowa

SHV's	AASHTO
EV's	FAST Act
Type 5-2	Iowa Legislation
Fluid Milk Permit	Iowa Legislation
All-Systems Permit	Iowa Legislation
Small Annual Crane Permit	Iowa Legislation
Annual Permit Trucks for LPA's	SNBI Changes
IOH Vehicle	Iowa Legislation
Hydroexcavators	Iowa Legislation

LPA's Can't Bulk Analyze and Must Rerate Every Bridge Every Time

4

IOWA DOT **Michael Baker INTERNATIONAL**

Implementation of AASHTOWare BrR Program for Rating Iowa Bridges

Challenges for Locals: Permitting



- Local Level:
 - LPA's can't currently bulk analyze
 - Can't Efficiently Review a Permit Request
- State Level:
 - Goal: Statewide Permitting System
 - Need Local Bridge Files Set Up for Our Permitting System

5


IOWA DOT **Michael Baker INTERNATIONAL**

Implementation of AASHTOWare BrR Program for Rating Iowa Bridges

Solution: BrR for Locals

Iowa DOT is Working to Set Up AASHTOWare BrR for the Locals

- Batch analyze for New Legislation and Permitting
- Get Ratings Quickly and Efficiently
- LPA's Have More Ownership Over the Files if they Want to Change Consultants
- BrR Can Model Many Different Bridge Types
- State will Provide Templates for Standard Bridges
- Getting the Local's Inventory in BrR would Help Towards a Statewide Permitting System



6

IOWA DOT **Michael Baker INTERNATIONAL**

Implementation of AASHTOWare BrR Program for Rating Iowa Bridges

MBI Scope – Documentation and Written Guidance

13

IOWA DOT **Michael Baker INTERNATIONAL**

Implementation of AASHTOWare BrR Program for Rating Iowa Bridges

Project Scope

Michael Baker Scope:

- BrR System & Analysis Settings
- BrR Libraries
- Initial Example Standard Bridge Models (One model/type)
 - Steel Girder
 - Prestressed I Beam
 - Prestressed Box Beam
 - Reinforced Concrete Slab
 - Triple Concrete Box Culvert
 - Corrugated Metal Pipe
- All truss Standard Bridge Models
- Documentation and Written Guidance

HGM – Kirkham Michael Scope:

- All Standard Bridge Models
 - Steel Girder
 - Prestressed Beam
 - Reinforced Concrete
- Initial Example Standard Bridge Models (One model/type)
 - Single Concrete Box Culvert
 - Double Concrete Box Culvert

IOWA DOT **Michael Baker INTERNATIONAL**

Implementation of AASHTOWare BrR Program for Rating Iowa Bridges

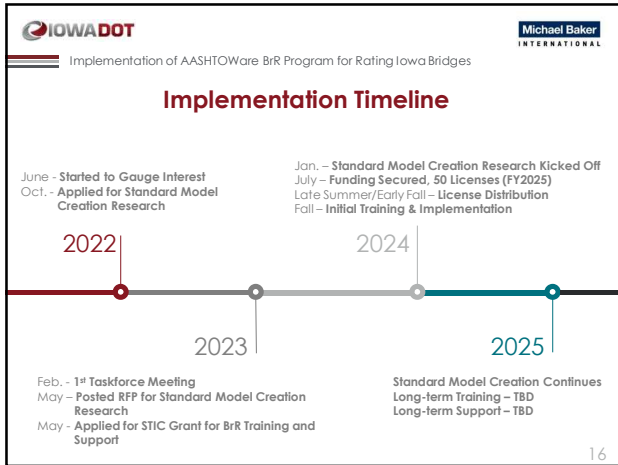
Training and Support

Initial Training

- ProMiles Will Do Training
- 2 Day In-Person
- Hands-On w/ Software
- Overview & BrR Set Up
- Creating Basic Bridge Models
- Iowa Specific Components
 - How to Copy and Adjust Standard Templates

Long-term Training & Support

- TBD



Questions?

James Hauber - james.hauber@iowadot.us - (515) 239-1393
Tim Armbricht - tim.armbricht@mbakerinl.com - (312) 575-3929

17
