



---

---

---

---

---

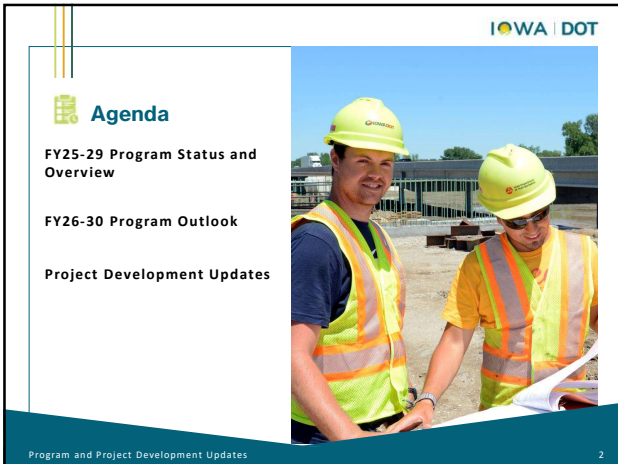
---

---

---

---

---



---

---

---

---

---

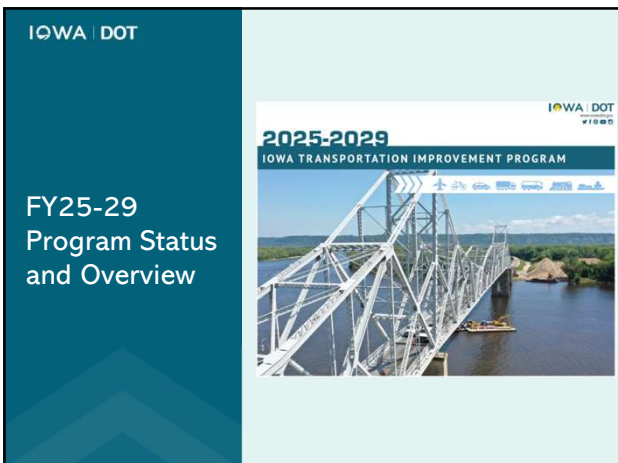
---

---

---

---

---



---

---

---

---

---

---

---

---

---

---

IOWA | DOT

**FY24 End of Year Program Balance**  
(amounts in \$millions)

Beginning Program Balance (Jul 2023)		(24.9)
Forecast PRF Receipts (Jun 2024)	903.6	
Actual PRF Receipts (Jun 2024)	<u>956.1</u>	
	Difference	52.5
Programmed Amounts (Jun 2024)	743.3	
Project Costs (Jun 2024)	<u>771.7</u>	
	Difference	(28.4)
<b>Ending Program Balance (Jun 2024)</b>		<b>(0.8)</b>

Program and Project Development Updates 4

---

---

---

---

---

---

---

---

---

---

---

---

IOWA | DOT

**FY25 Current Program Balance**  
(amounts in \$millions)

Beginning Program Balance (Jul 2024)		(45.2)
Forecast PRF Receipts (Aug 2024)	176.9	
Actual PRF Receipts (Aug 2024)	<u>173.4</u>	
	Difference	(3.5)
Programmed Amounts (Sep 2024)	325.8	
Project Costs (Sep 2024)	<u>292.4</u>	
	Difference	33.4
<b>Current Program Balance (Sep 2024)</b>		<b>(15.3)</b>

Program and Project Development Updates 5

---

---

---

---

---

---

---

---

---

---

---

---

- IOWA | DOT
- FY25-29 Program Summary**
- Approved June 11, 2024
  - \$4.5 billion of state/federal funding over five years
  - Increased investment on pavements with a focus on Interstate pavements
  - Added final phase of I-380 widening between Iowa City and Cedar Rapids
  - Adds 50 new truck parking spots on the Interstate
  - Financial situation
    - No new revenue
    - Inflation is moderating
    - Three of the five years are beyond the life of the Infrastructure Bill – forecast flat revenue
- Program and Project Development Updates 6

---

---

---

---

---

---

---

---

---

---

---

---





US 18 over Stony Creek - west of Spencer IOWA DOT



Program and Project Development Updates 13

---

---

---

---

---

---

---

---

IA 3 over Little Sioux River - east of Cherokee IOWA DOT



Program and Project Development Updates 14

---

---

---

---

---

---

---

---

IA 3 over Little Sioux River - east of Cherokee IOWA DOT



Program and Project Development Updates 15

---

---

---

---

---

---

---

---



---

---

---

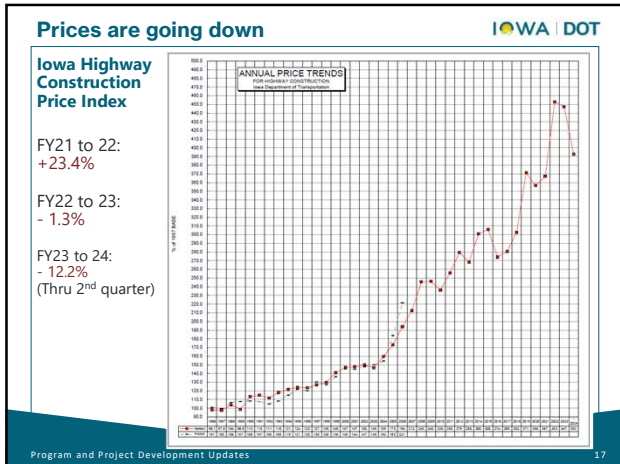
---

---

---

---

---



---

---

---

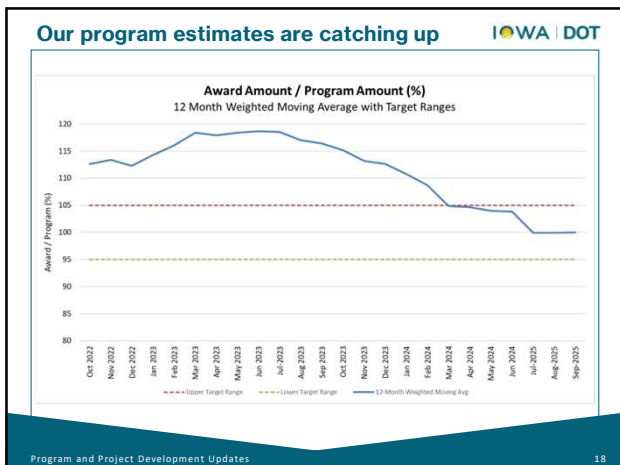
---

---

---

---

---



---

---

---

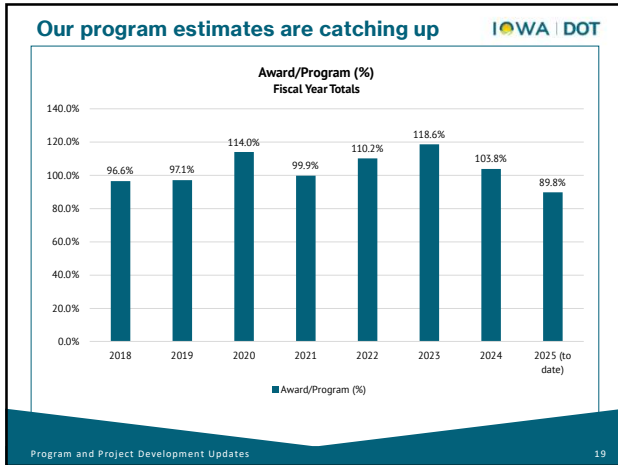
---

---

---

---

---




---

---

---

---

---

---

---

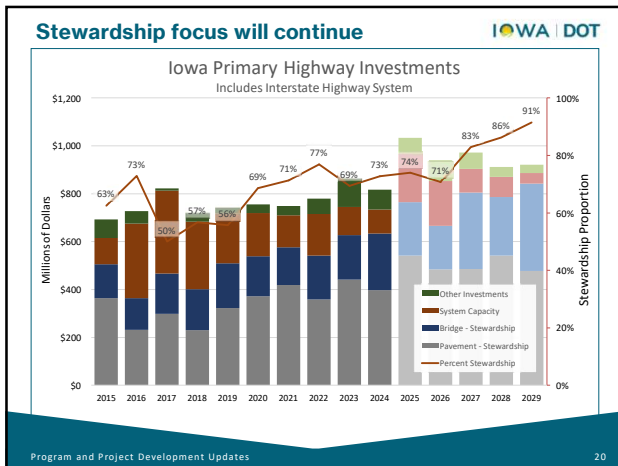
---

---

---

---

---




---

---

---

---

---

---

---

---

---

---

---

---

### Funding Outlook

IOWA | DOT

- State funding
  - Growth projected to be modest but steady
  - Fee for new registration continues to be a strong component of RUTF revenue
  - Prepared for growth of EVs
- Federal funding
  - FFY 2025 appropriations
  - Surface Transportation Reauthorization

Program and Project Development Updates 21

---

---

---

---

---

---

---

---

---

---

---

---



---

---

---

---

---

---

---

---

IOWA | DOT

### Digital delivery - what is it?



#### What is Digital Delivery?

DIGITAL DELIVERY is a modern process in which 3D models and other files are created and delivered to facilitate construction and incorporate digital information to support maintenance and operations activities and lifecycle asset management.

Program and Project Development Updates 23

---

---

---

---

---


---

---



---

IOWA | DOT

### Digital delivery - how is it different?



**ELECTRONIC WORKFLOWS** are based on paperless, document-type exchanges, in which information must be manually extracted and entered into other systems.



**DIGITAL WORKFLOWS** are based on data-based exchanges, in which information can be easily transferred to a computer system with little to no manual entry.

Program and Project Development Updates 24

---

---

---

---

---

---






---

---



IOWA | DOT

### Digital delivery – what are the benefits?

-  Improved design quality
-  Early identification of potential issues that reduce change orders
-  Data visualization allows project teams to optimize construction means, methods, and schedules
-  Streamlined data collection that reduces duplication of work
-  Ability to access the right information at the right time

Program and Project Development Updates 25

---

---

---

---

---

---

---

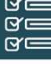





---

---

---

IOWA | DOT

### Digital delivery – what are the focus areas?

 Data Requirements, Standards and Guidelines	 Technology Implementation
 Data Collection and Storage	 Workforce Development Outcomes
 Workflow Efficiency	 Digital Delivery Lead and Communications

Program and Project Development Updates 26

---

---

---

---

---

---

---

---

---

---

IOWA | DOT

### Proposed utility policy updates

- Performance bond requirements
- Digital as-built plan requirements
- 10-day notice for lane restrictions or closures
- Non-compliance definitions
- Increased allowances for longitudinal installations in freeway rights of way
- Other process improvements to encourage earlier identification, avoidance and relocation

Program and Project Development Updates 27

---

---

---

---

---

---

---

---

---

---

IOWA | DOT

**Proposed utility policy updates – next steps**

- Regulatory analysis published in the Iowa Administrative Bulletin (IAB) on Oct 2
- Public hearing on regulatory analysis on Oct 28
- Notice of Intended action (Nov-Dec)
- Final rule published (end of Dec)

Program and Project Development Updates 28

---

---

---

---

---

---

---

---

IOWA | DOT

**Questions?**

**Charlie Purcell**  
515-357-0143  
Charlie.Purcell@iowadot.us

Program and Project Development Updates 29

---

---

---

---

---

---

---

---